

# Mi-T-M<sup>®</sup> CORPORATION

8650 Enterprise Drive, Peosta IA 52068

563-556-7484 / Fax 563-556-1235

[www.mitm.com](http://www.mitm.com)

## PARTS LIST FOR CW-2405/3004-0ME1/0ME3

Motor Horsepower:

7.5 H.P.

Pump Oil Grade:

Mi-T-M Pump Oil #AW-4085-0016

Pump Oil Capacity:

40.6 oz.

Nozzle Size:

CW-2405-0ME1/0ME3: 6.0

CW-3004-0ME1/0ME3: 4.0

This Parts Listing has been compiled for your benefit. You can be assured your Mi-T-M Cold Water Pressure Washer was constructed and designed with quality and performance in mind using over 25 years experience in the pressure washer business. Each component has been rigorously tested to insure the highest level of acceptance.

The contents of this Parts Listing are based on the latest product information available at the time of publication. Mi-T-M reserves the right to make changes in price, color, materials, equipment, specifications or models at any time without notice.

### **WARNING**

THIS IS A PROFESSIONAL HIGH PRESSURE, COLD WATER PRESSURE WASHER. CAUTION SHOULD BE OBSERVED WHEN USING OR REPAIRING THIS UNIT! READ AND FOLLOW THE SAFETY WARNINGS LISTED BELOW BEFORE ATTEMPTING ANY REPAIRS ON THIS PRESSURE WASHER!

### **SAFETY WARNINGS**

1. NEVER alter or modify the equipment. Be sure any accessory items and system components being used will withstand the pressure developed. Use only genuine Mi-T-M parts for repair of your pressure washer. Failure to do so can cause hazardous operating conditions and will VOID warranty.
2. NEVER make adjustments on machinery while the unit is connected to the engine without first removing the ignition cable from the spark plug. Turning over the machinery by hand during adjustment or cleaning might start the engine and machinery with it, causing serious injury to the operator.
3. Know how to stop and bleed pressures quickly. Be thoroughly familiar with controls.
4. Before servicing the unit, turn unit off, relieve the water pressure and allow the unit to cool down. Do not make repairs while the unit is running. Service in a clean, dry, flat area. Block the wheels to prevent the unit from moving. Be especially careful to properly dispose of any flammable materials.
5. After testing the machine, DO NOT leave the pressurized unit unattended. Shut off the unit and release trapped pressure before leaving.

## Table of Contents

SPECIFICATIONS FOR CW-2405-0ME1/0ME3 .....	4
SPECIFICATIONS FOR CW-3004-0ME1/0ME3 .....	5
FRAME ASSEMBLY FOR CW-2405-0ME1/0ME3 .....	6
FRAME ASSEMBLY FOR CW-3004-0ME1/0ME3 .....	8
PUMP ASSEMBLY (3-0079) .....	10
UNLOADER ASSEMBLY (8-0032) .....	12
GUN ASSEMBLY (16-0001) .....	14
WIRING SCHEMATIC FOR CW-2405/3004-0ME1 (230 VOLT) .....	16
WIRING DIAGRAM FOR CW-2405/3004-0ME1 (230 VOLT) .....	16
WIRING SCHEMATIC FOR CW-2405/3004-0ME3 (230 VOLT) .....	17
WIRING DIAGRAM FOR CW-2405/3004-0ME3 (230 VOLT) .....	17
WIRING SCHEMATIC FOR CW-2405/3004-0ME3 (CX-0003 OPTION) (460 VOLT) .....	18
WIRING DIAGRAM FOR CW-2405/3004-0ME3 (CX-0003 OPTION) (460 VOLT) .....	18
NOTES .....	19

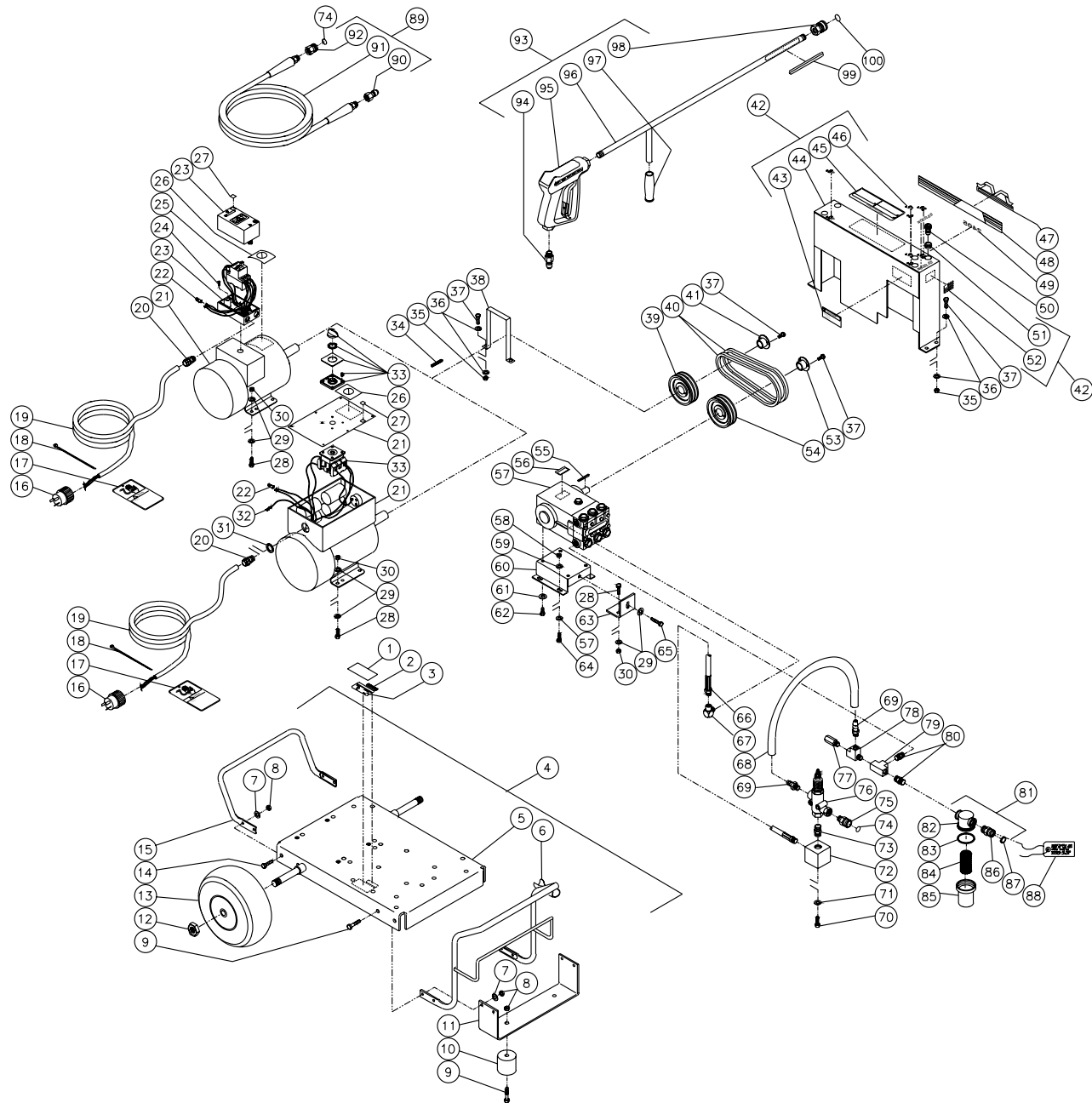
**SPECIFICATIONS FOR CW-2405-0ME1/0ME3**

<b>MODEL NUMBER</b>	<b>CW-2405-0ME1</b>	<b>CW-2405-0ME3</b>
<b>Operating Pressure (PSI/Bar):</b>	2400/165.5	
<b>High Pressure Nozzle:</b>	6.0	
<b>Water Volume (GPM/lpm):</b>	4.6/17.4	
<b>Motor:</b>	Totally enclosed fan cooled, circuit breaker thermal overload protection, 10ft. power supply cord.	
Horsepower	7.5	
Voltage	230	230/460
Phase	Single	Three
Amps	35.7	24.7/11.5
<b>Pump:</b>	Belt Driven, Oil Bath, Triplex Piston	
Oil Type	Mi-T-M Pump Oil #AW-4085-0016	
Oil Capacity (oz./liters)	40.6/1.20	
Plungers	Ceramic	
Manifold	Forged Brass	
Valves	Stainless Steel	
Heat Dump Valve	Relieves heated water during unloader bypass stage.	
Unloader:	Preset	
Detergent Injector	Adjustable low pressure down stream from pump	
<b>Unit Net Weight (lbs/Kg)</b>	347/157.5	270/122.5
<b>Unit Shipping Weight (lbs/Kg)</b>	335/152	257/116.5
<b>Unit Net Dimension (in/cm)</b>	46Lx28Wx30H/117Lx71Wx76H	
<b>Unit Shipping Dimension (in/cm)</b>	49Lx30.5Wx35.5H/124Lx77.5Wx90H	

**SPECIFICATIONS FOR CW-3004-0ME1/0ME3**

<b>MODEL NUMBER</b>	<b>CW-3004-0ME1</b>	<b>CW-3004-0ME3</b>
<b>Operating Pressure (PSI/Bar):</b>	3000/206.8	
<b>High Pressure Nozzle:</b>	4.0	
<b>Water Volume (GPM/lpm):</b>	3.5/13.2	
<b>Motor:</b>	Totally enclosed fan cooled, circuit breaker thermal overload protection, 10ft. power supply cord.	
Horsepower	7.5	
Voltage	230	230/460
Phase	Single	Three
Amps	35	23/11.5
<b>Pump:</b>	Belt Driven, Oil Bath, Triplex Piston	
Oil Type	Mi-T-M Pump Oil #AW-4085-0016	
Oil Capacity (oz./liters)	40.6/1.20	
Plungers	Ceramic	
Manifold	Forged Brass	
Valves	Stainless Steel	
Heat Dump Valve	Relieves heated water during unloader bypass stage.	
Unloader:	Preset	
Detergent Injector	Adjustable low pressure down stream from pump	
<b>Unit Net Weight (lbs/Kg)</b>	347/157.5	270/122.5
<b>Unit Shipping Weight (lbs/Kg)</b>	335/152	257/116.5
<b>Unit Net Dimension (in/cm)</b>	46Lx28Wx30H/117Lx71Wx76H	
<b>Unit Shipping Dimension (in/cm)</b>	49Lx30.5Wx35.5H/124Lx77.5Wx90H	

# FRAME ASSEMBLY FOR CW-2405-0ME1/0ME3

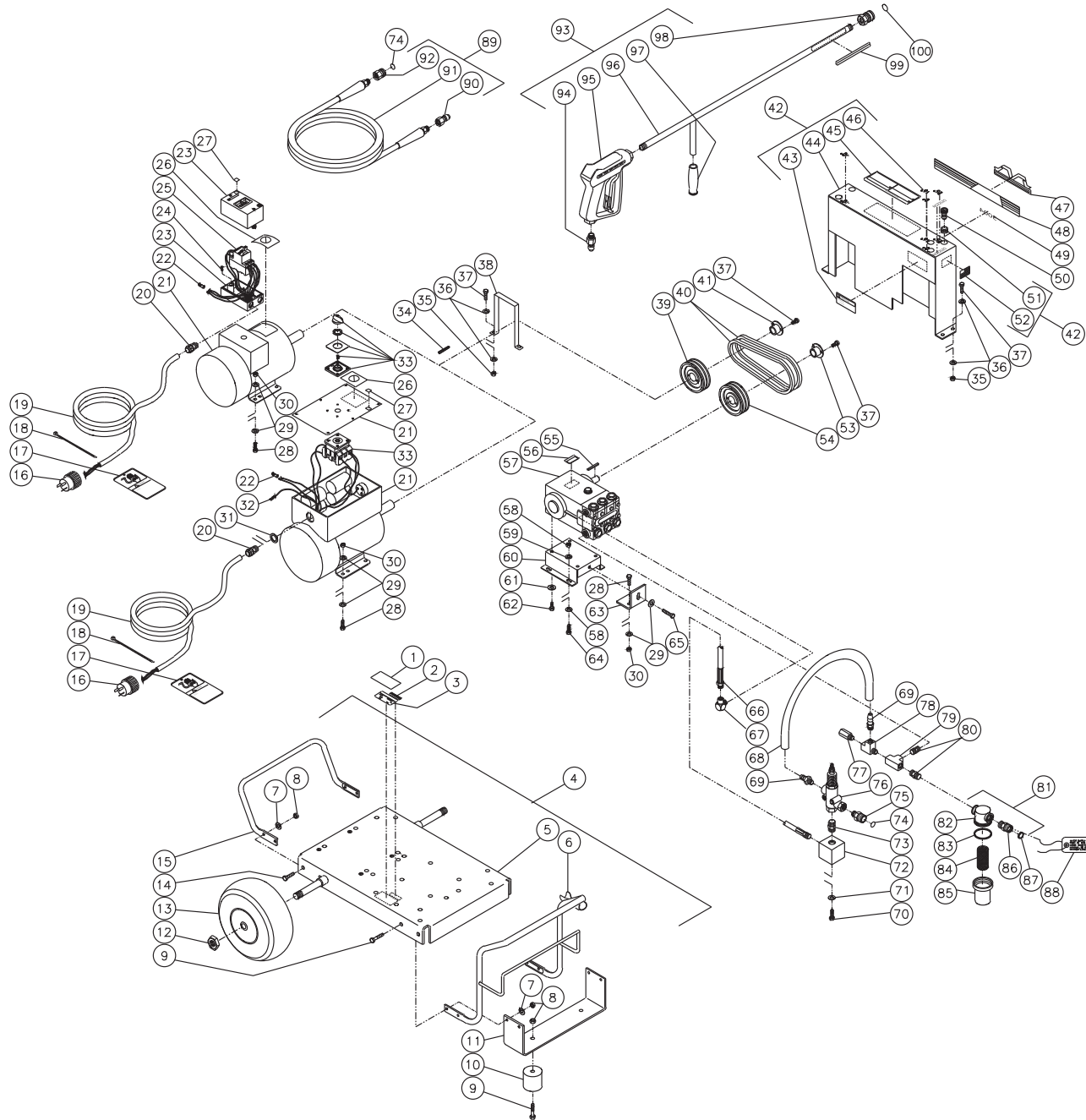


CW-2405-0ME1/3-053000-RD

FRAME ASSEMBLY FOR CW-2405-0ME1/0ME3											
REF #	DESCRIPTION	PART #	QTY	REF #	DESCRIPTION	PART #	QTY	REF #	DESCRIPTION	PART #	QTY
1	Decal- Clear Laminata	N/A	1	31	Locknut (CW-2405-0ME1)	32-0292	1	65	Bolt	27-0576	1
2	Decal- Serial Number	N/A	1	32	Terminal (CW-2405-0ME1)	32-0034	1	66	Hose	15-0024	1
3	Decal- Data Plate	N/A	1	33	Switch (CW-2405-0ME1)	32-0301	1	67	Elbow	24-0105	1
4	Base Plate Assembly (Inc. 5-15)	851-0187	1	34	Key	43-0078	1	68	By-Pass Hose	15-0035	1
5	Base Plate	5-0089A01	1	35	Locknut	30-0155	6	69	Hose Barb	23-0007	2
6	Handle- Front	7-0102A01	1	36	Washer	28-0002	12	70	Bolt	27-0116	2
7	Washer	28-0003	8	37	Bolt	27-0015	6	71	Washer	29-0008	2
8	Locknut	30-0157	10	38	Finger Guard	6-0054A01	1	72	Manifold Block	51-0012	1
9	Bolt	27-0068	6	39	Sheave	10-0041	1	73	Hex Nipple	24-0031	1
10	Isolator	14-0008	2	40	Belt	11-0017	2	74	O-ring (Replacement)	25-0123	-
11	Underbracket	13-0015A01	1	41	Bushing	9-0008	1	75	Quick Connect Socket	17-0029	1
12	Jamnut	30-0117	2	42	Beltguard Assembly (Inc. 43-46, 51, 52)	851-0280	1	76	Unloader	8-0032	1
13	Wheel	14-0006	2	43	Decal- Caution: High Pressure Spray	34-0080	1	77	Heat Dump Valve	22-0005	1
14	Bolt	27-0067	4	44	Beltguard (See 851-0280)	N/A Sep.	1	78	Street Tee	23-0124	1
15	Handle- Rear	7-0105A01	1	45	Decal- Warning/Caution/Operation	34-0362	1	79	Tee	23-0043	1
16	Plug- 250V (CW-2405-0ME1)	32-0012	1	46	Decal- Nozzle	34-0500	1	80	Hex Nipple	23-0012	2
-	Plug- 250V (CW-2405-0ME3)	32-0037	1	47	Decal- Mi-T-M Logo	62-0086	1	81	Strainer (Inc. 82-87)	19-0057	1
-	Plug- 480V (CX-0003) (CW-2405-0ME3)	32-0117	1	48	Decal- Mi-T-M Stripe	34-0501	1	82	Strainer Cap	19-0058	1
17	Tag- Risk of Electrocution	34-0330	1	49	Decal- Die Cut 2405	34-0035	1	83	Strainer Gasket	26-0160	1
18	Cable Tie	33-0022	1	50	Spray Nozzle- 0006	18-0013	1	84	Stainless Steel Screen	19-0059	1
19	Cord- 250V *(Ten Feet Required) (CW-2405-0ME1)	32-0021	1	-	Spray Nozzle- 1506	18-0014	1	85	Strainer Bowl	19-0060	1
-	Cord- 250V *(Ten Feet Required) (CW-2405-0ME3)	32-0023	1	-	Spray Nozzle- 2506	18-0043	1	86	Garden Hose Swivel	23-0095	1
-	Cord- 480V *(Ten Feet Required) (CX-0003) (CW-2405-0ME3)	32-0025	1	-	Spray Nozzle- 4006	18-0044	1	87	Garden Hose Gasket	26-0001	1
20	Cord Strain Relief (CW-2405-0ME1)	32-0040	1	51	Grommet	33-0001	5	88	Tag - Water Supply Inlet	34-0097	1
-	Cord Strain Relief (CW-2405-0ME3)	32-0013	1	52	Decal- American Flag	34-0521	1	89	Pressure Hose Assembly (Inc. 90-92)	851-0007	1
21	Motor- 7.5 H.P. (CW-2405-0ME1)	2-0013	1	53	Bushing- Pump	9-0017	1	90	Quick Connect Socket	17-0006	1
-	Motor- 7.5 H.P. (CW-2405-0ME3)	2-0016	1	54	Sheave- Pump	10-0035	1	91	Pressure Hose	15-0003	1
22	Crimped Wire Splice	32-0359	1	55	Key- Pump	43-0028	1	92	Quick Connect Socket	17-0004	1
23	Starter Enclosure (CW-2405-0ME3)	32-0293	1	56	Decal- Pump ID #	N/A	1	93	Gun/Wand Assembly (Inc. 94-98)	851-0095	1
24	Screw (CW-2405-0ME3)	27-3048	2	57	Pump	3-0079	1	94	Quick Connect Plug	17-0005	1
25	Starter- 240V (CW-2405-0ME3)	32-0298	1	58	Locknut	30-0161	4	95	Gun	16-0001	1
-	Starter- 480V (CX-0003) (CW-2405-0ME3)	32-0297	1	59	Washer	28-0030	8	96	Wand w/ 36" Handle	16-0120A01	1
26	Decal- Do Not Spay	34-0391	1	60	Pump Bracket	5-0101A01	1	97	Grip Handle	7-0002	1
27	Decal- Void if Removed	34-0085	1	61	Washer	29-0054	4	98	Quick Connect Socket	17-0001	1
28	Bolt	27-0118	6	62	Bolt	27-8042	4	99	Decal- Warning: Risk of Injection	34-0572	1
29	Washer	28-0023	11	63	Brace Tightener	13-0003A01	1	100	O-ring (Replacement)	25-0122	-
30	Locknut	30-0159	6	64	Bolt	27-0166	4				

\*Must Order in One Foot Lengths

# FRAME ASSEMBLY FOR CW-3004-0ME1/0ME3



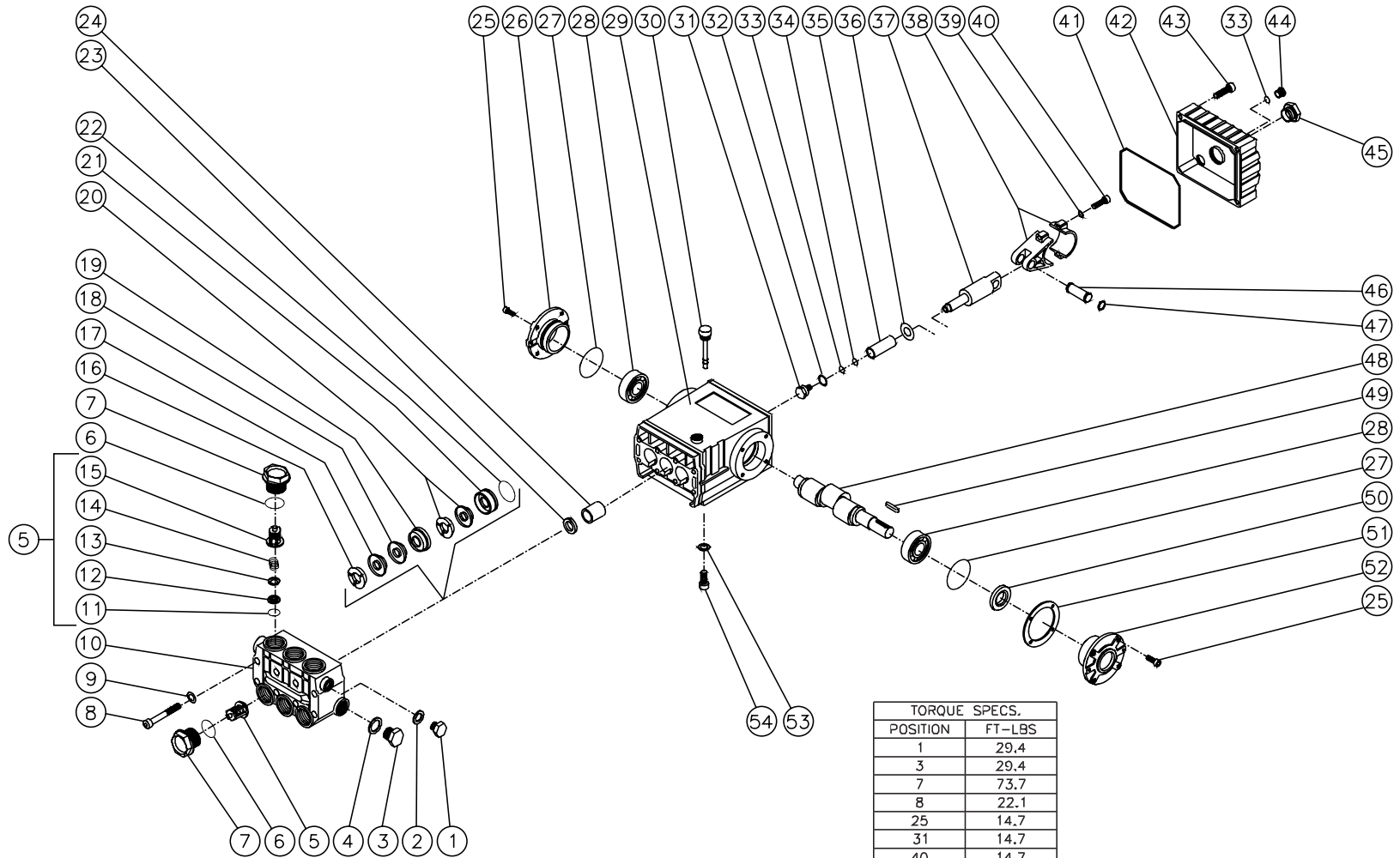
CW-3004-0ME1/3-060700-RD



FRAME ASSEMBLY FOR CW-3004-0ME1/0ME3											
REF #	DESCRIPTION	PART #	QTY	REF #	DESCRIPTION	PART #	QTY	REF #	DESCRIPTION	PART #	QTY
1	Decal- Clear Laminate	N/A	1	31	Locknut (CW-3004-0ME1)	32-0292	1	65	Bolt	27-0576	1
2	Decal- Serial Number	N/A	1	32	Terminal (CW-3004-0ME1)	32-0034	1	66	Hose	15-0024	1
3	Decal- Data Plate	N/A	1	33	Switch (CW-3004-0ME1)	32-0301	1	67	Elbow	24-0105	1
4	Base Plate Assembly (Inc. 5-15)	851-0187	1	34	Key	43-0078	1	68	By-Pass Hose	15-0035	1
5	Base Plate	5-0089A01	1	35	Locknut	30-0155	6	69	Hose Barb	23-0007	2
6	Handle- Front	7-0102A01	1	36	Washer	28-0002	12	70	Bolt	27-0116	2
7	Washer	28-0003	8	37	Bolt	27-0015	6	71	Washer	29-0008	2
8	Locknut	30-0157	10	38	Finger Guard	6-0054A01	1	72	Manifold Block	51-0012	1
9	Bolt	27-0068	6	39	Sheave	10-0025	1	73	Hex Nipple	24-0031	1
10	Isolator	14-0008	2	40	Belt	11-0005	2	74	O-ring (Replacement Only)	25-0123	-
11	Underbracket	13-0015A01	1	41	Bushing	9-0008	1	75	Quick Connect Socket	17-0029	1
12	Jamnut	30-0117	2	42	Beltguard Assembly (Inc. 43-46, 51, 52)	851-0280	1	76	Unloader	8-0032	1
13	Wheel	14-0006	2	43	Decal- Caution: High Pressure Spray	34-0080	1	77	Heat Dump Valve	22-0005	1
14	Bolt	27-0067	4	44	Beltguard (See 851-0280)	N/A Sep.	1	78	Street Tee	23-0124	1
15	Handle- Rear	7-0105A01	1	45	Decal- Warning/Caution/Operation	34-0362	1	79	Tee	23-0043	1
16	Plug- 250V (CW-3004-0ME1)	32-0012	1	46	Decal- Nozzle	34-0500	1	80	Hex Nipple	23-0012	2
-	Plug- 250V (CW-3004-0ME3)	32-0037	1	47	Decal- Mi-T-M Logo	62-0086	1	81	Strainer (Inc. 82-87)	19-0057	1
-	Plug- 480V (CX-0003) (CW-3004-0ME3)	32-0117	1	48	Decal- Mi-T-M Stripe	34-0501	1	82	Strainer Cap	19-0058	1
17	Tag- Risk of Electrocution	34-0330	1	49	Decal- Die Cut 3004	34-0105	1	83	Strainer Gasket	26-0160	1
18	Cable Tie	33-0022	1	50	Spray Nozzle- 0004	18-0028	1	84	Stainless Steel Screen	19-0059	1
19	Cord- 250V *(Ten Feet Required) (CW-3004-0ME1)	32-0021	1	-	Spray Nozzle- 1504	18-0029	1	85	Strainer Bowl	19-0060	1
-	Cord- 250V *(Ten Feet Required) (CW-3004-0ME3)	32-0023	1	-	Spray Nozzle- 2504	18-0030	1	86	Garden Hose Swivel	23-0095	1
-	Cord- 480V *(Ten Feet Required) (CX-0003) (CW-3004-0ME3)	32-0025	1	-	Spray Nozzle- 4004	18-0031	1	87	Garden Hose Gasket	26-0001	1
20	Cord Strain Relief (CW-3004-0ME1)	32-0040	1	51	Grommet	33-0001	5	88	Tag - Water Supply Inlet	34-0097	1
-	Cord Strain Relief (CW-3004-0ME3)	32-0013	1	52	Decal- American Flag	34-0521	1	89	Pressure Hose Assembly (Inc. 90-92)	851-0007	1
21	Motor- 7.5 H.P. (CW-3004-0ME1)	2-0013	1	53	Bushing- Pump	9-0017	1	90	Quick Connect Socket	17-0006	1
-	Motor- 7.5 H.P. (CW-3004-0ME3)	2-0016	1	54	Sheave- Pump	10-0035	1	91	Pressure Hose	15-0003	1
22	Crimped Wire Splice	32-0359	1	55	Key- Pump	43-0028	1	92	Quick Connect Socket	17-0004	1
23	Starter Enclosure (CW-3004-0ME3)	32-0293	1	56	Decal- Pump ID #	N/A	1	93	Gun/Wand Assembly (Inc. 94-98)	851-0095	1
24	Screw (CW-3004-0ME3)	27-3048	2	57	Pump	3-0079	1	94	Quick Connect Plug	17-0005	1
25	Starter- 240V (CW-3004-0ME3)	32-0298	1	58	Locknut	30-0161	4	95	Gun	16-0001	1
-	Starter- 480V (CX-0003) (CW-3004-0ME3)	32-0297	1	59	Washer	28-0030	8	96	Wand w/ 36" Handle	16-0120A01	1
26	Decal- Do Not Spray	34-0391	1	60	Pump Bracket	5-0101A01	1	97	Grip Handle	7-0002	1
27	Decal- Void if Removed	34-0085	1	61	Washer	29-0054	4	98	Quick Connect Socket	17-0001	1
28	Bolt	27-0118	6	62	Bolt	27-8042	4	99	Decal- Warning: Risk of Injection	34-0572	1
29	Washer	28-0023	11	63	Brace Tightener	13-0003A01	1	100	O-ring (Replacement)	25-0122	-
30	Locknut	30-0159	6	64	Bolt	27-0166	4				

\*Must Order in One Foot Lengths

# PUMP ASSEMBLY (3-0079)

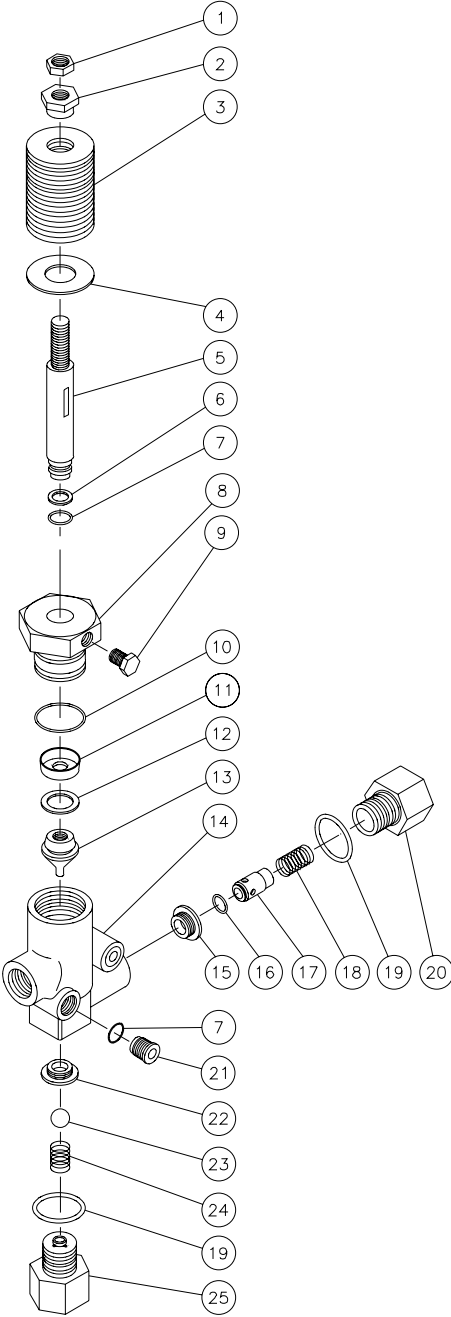


TORQUE SPECS.	
POSITION	FT-LBS
1	29.4
3	29.4
7	73.7
8	22.1
25	14.7
31	14.7
40	14.7
43	7.3
44	14.7
45	14.7
54	29.4

## HIGH PRESSURE PUMP (3-0079)

REF. #	DESCRIPTION	PART #	QTY.	REF. #	DESCRIPTION	PART #	QTY.	REF. #	DESCRIPTION	PART #	QTY.
1	Hex Plug	39-0018	1	21	Seal Retainer	46-0057	3	41	O-ring Cover	25-0339	1
2	Washer	28-1002	1	22	O-ring	25-0015	3	42	Crankcase Cover	46-0295	1
3	Hex Plug	39-0019	1	23	Oil Seal	26-0047	3	43	Bolt	27-8404	5
4	Washer	28-1038	1	24	Bushing	9-0029	3	44	Hex Plug	39-0017	1
5	Valve Assy. (Includes 11-15) (See 70-0009)	N/A Sep.	6	25	Bolt	27-8431	8	45	Oil Level Indicator	46-0114	1
6	O-ring	25-0012	6	26	Crankcase Cover-Closed	46-0336	1	46	Connecting Rod Pin	43-0032	3
7	Valve Plug	39-0020	6	27	O-ring	25-0013	2	47	Retaining Ring	46-0103	6
8	Bolt	27-8185	8	28	Roller Bearing	48-0012	2	48	Crankshaft	46-0050	1
9	Flatwasher	28-1039	8	29	Crankcase	46-0047	1	49	Key	43-0048	1
10	Pump Manifold - Brass 20mm	46-0060	1	30	Oil Dipstick	46-0144	1	50	Oil Seal	26-0049	1
11	O-ring (See 70-0009)	N/A Sep.	6	31	Piston Bolt	46-0069	3	51	Shim	46-0113	1
12	Valve Seat (See 70-0009)	N/A Sep.	6	32	Washer	28-0400	3	52	Crankcase Cover-Open	46-0296	1
13	Valve Plate (See 70-0009)	N/A Sep.	6	33	O-ring	25-0014	4	53	Lockwasher	29-0055	4
14	Valve Spring (See 70-0009)	N/A Sep.	6	34	Back-up Ring	46-0109	3	54	Bolt	27-8471	4
15	Valve Cage (See 70-0009)	N/A Sep.	6	35	Plunger	46-0052	3		Valve Kit (6 each of 11-15)	70-0009	
16	High Pressure Head Ring (See 852-0122)	N/A Sep.	3	36	Slinger Washer	46-0146	3		Head Ring Kit (3 each of 16)	70-0030	
17	High Pressure V-Packing (See 852-0122)	N/A Sep.	3	37	Piston Rod	46-0056	3		Packing Kit (3 each of 17, 18, 20)	70-0147	
18	Stop Ring Packing (See 852-0122)	N/A Sep.	3	38	Connecting Rod	46-0051	3		Packing Assy. (3 each of 16, 17, 18, 20, 22)	852-0122	
19	Intermediate Ring	46-0659	3	39	Lockwasher	29-0154	6		Intermediate Retainer Kit (3 each 18, 19)	70-0148	
20	Low Pressure Seal (See 852-0122)	N/A Sep.	3	40	Bolt	27-8435	6				

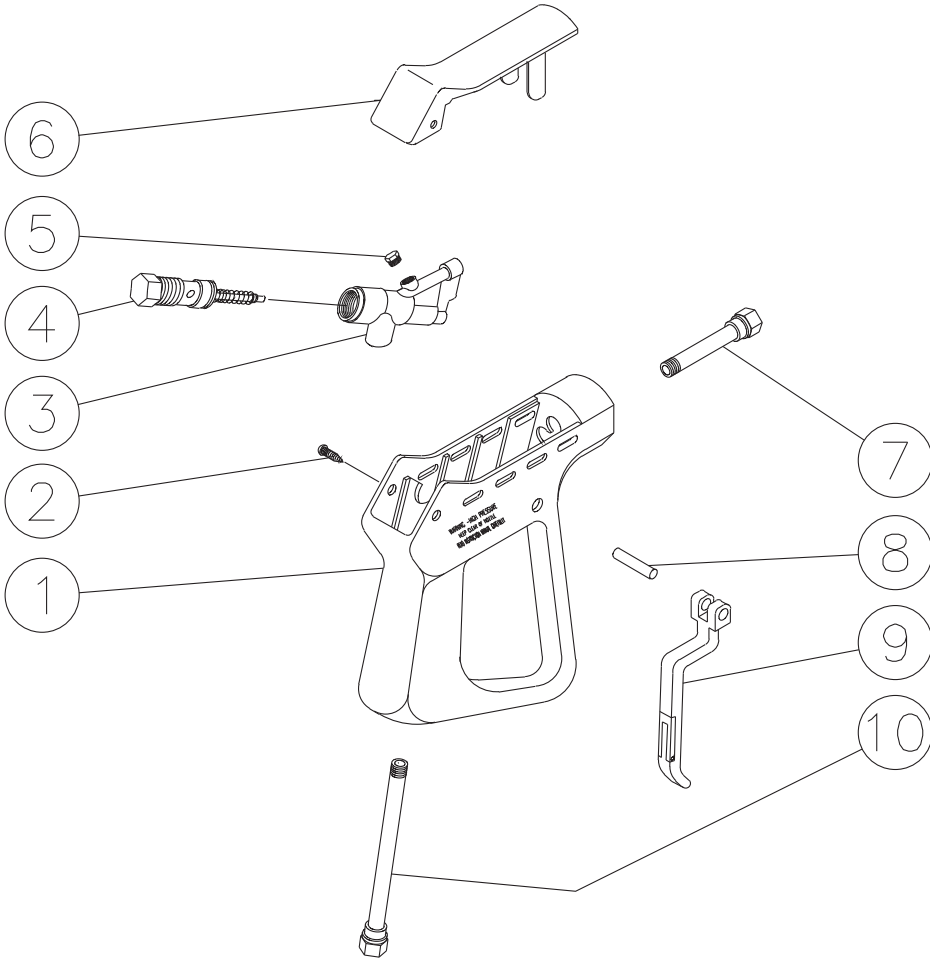
# UNLOADER ASSEMBLY (8-0032)



OMGEN074-083094-BAR

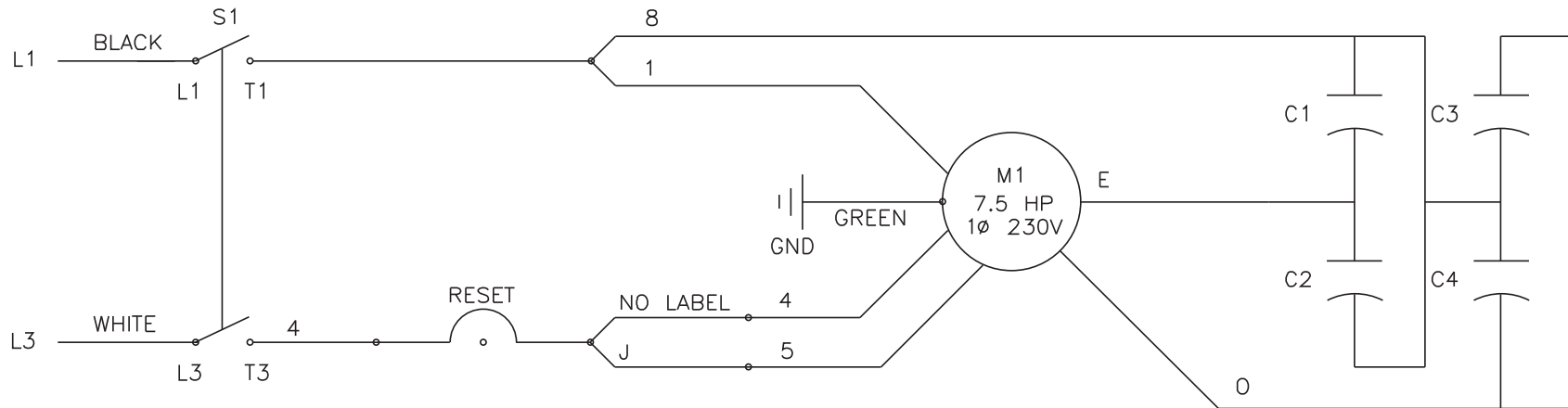
UNLOADER ASSEMBLY (8-0032)			
REF.#	DESCRIPTION	PART #	QTY.
1	Locknut	30-3058	1
2	Adjusting Nut	8-0089	1
3	Spring Washers - Orange	8-0009	15
4	Washer	28-0250	1
5	Valve Stem	8-0037	1
6	Backup Ring	8-0038	1
7	O-ring	25-0009	5
8	Valve Cap	8-0036	1
9	Set Screw	8-0084	1
10	O-ring	25-0008	1
11	Cup	8-0034	1
12	Back-up Ring	8-0040	1
13	Piston	8-0039	1
14	Valve Body	8-0164	1
15	Outlet Seat	8-0006	1
16	O-ring	25-0011	1
17	Outlet Valve	8-0004	1
18	Spring	49-0016	1
19	O-ring	25-0010	2
20	Outlet Retainer	8-0003	1
21	Brass Plug	8-0011	4
22	Valve Seat	8-0005	1
23	Ball	8-0041	1
24	Spring	49-0015	1
25	Inlet Retainer	8-0165	1
	Unloader Repair Kit (Inc. 6, 7, 10-12, 16 and 19)	70-0044	

# GUN ASSEMBLY (16-0001)



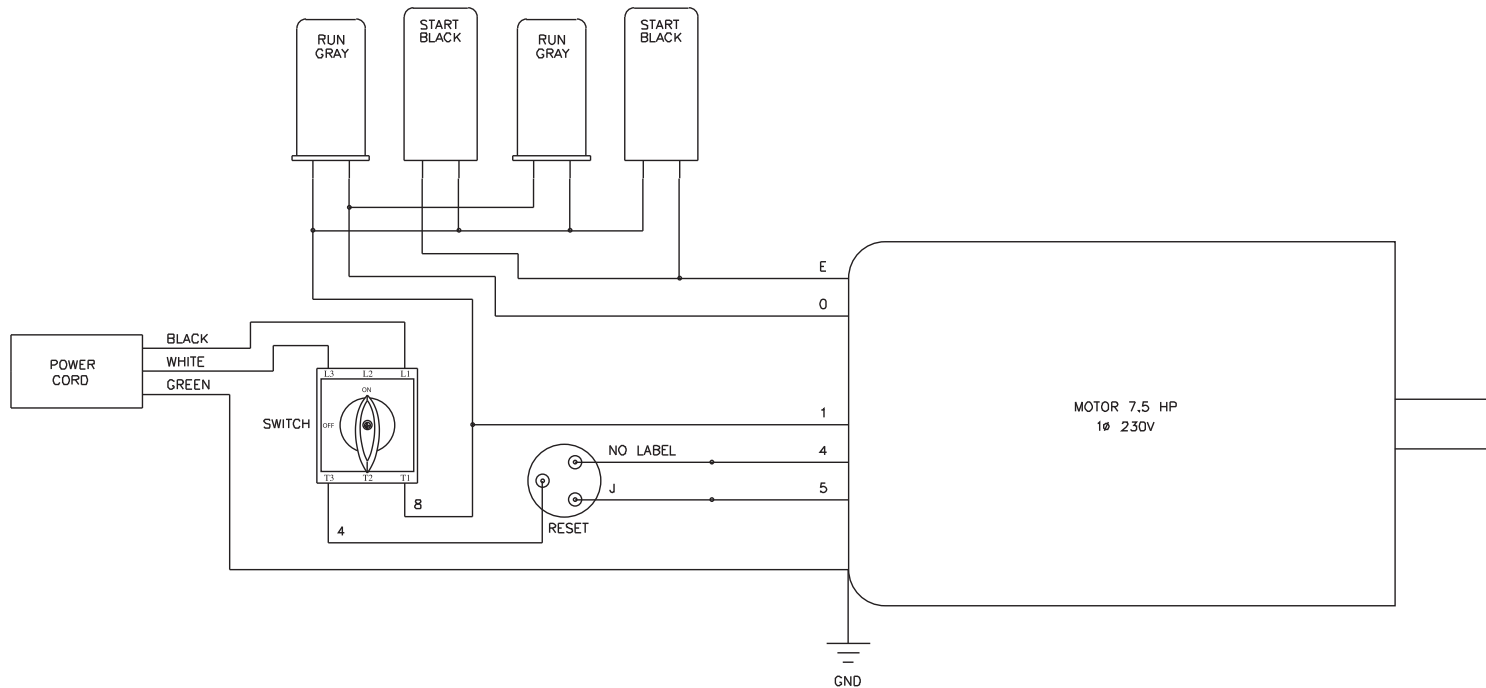
<b>GUN ASSEMBLY (16-0001)</b>			
<b>REF. #</b>	<b>DESCRIPTION</b>	<b>PART #</b>	<b>QTY.</b>
1	Plastic Housing	16-0008	1
2	Screw	27-3230	2
3	Brass Housing	16-0012	1
4	Gun Repair Kit	70-0055	1
5	Brass Plug	39-0024	1
6	Plastic Cover	16-0009	1
7	Pipe Assembly	16-0013	1
8	Trigger Pin	16-0063	1
9	Trigger/Safety Lock-off	16-0010	1
10	Pipe Assembly- Inlet	16-0016	1
	Complete Gun Assembly	16-0001	1

**WIRING SCHEMATIC FOR CW-2405/3004-0ME1 (230 VOLT)**



PDCW-0110S-072595-DCE

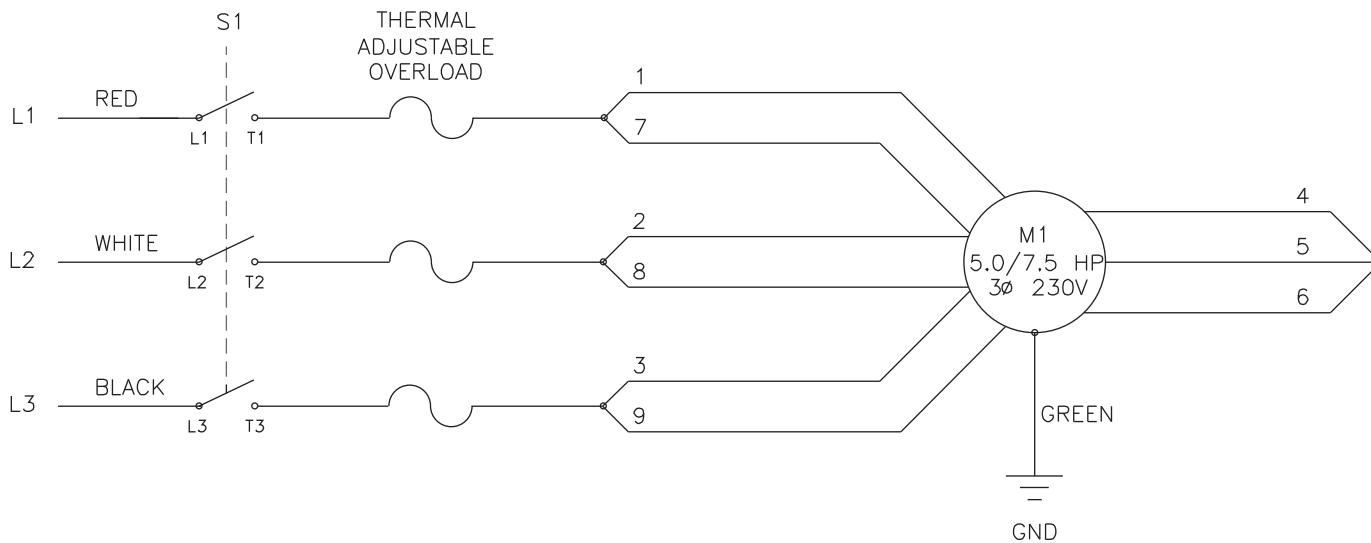
**WIRING DIAGRAM FOR CW-2405/3004-0ME1 (230 VOLT)**



PDCW-0110D-072595-DCE

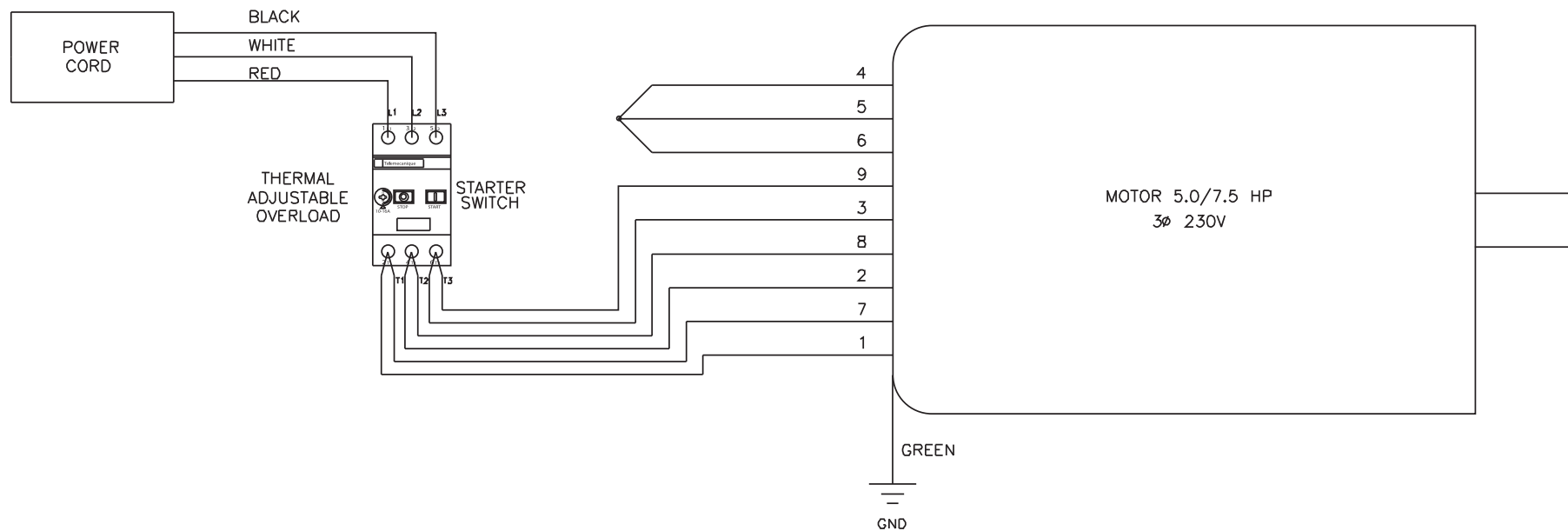


### WIRING SCHEMATIC FOR CW-2405/3004-0ME3 (230 VOLT)



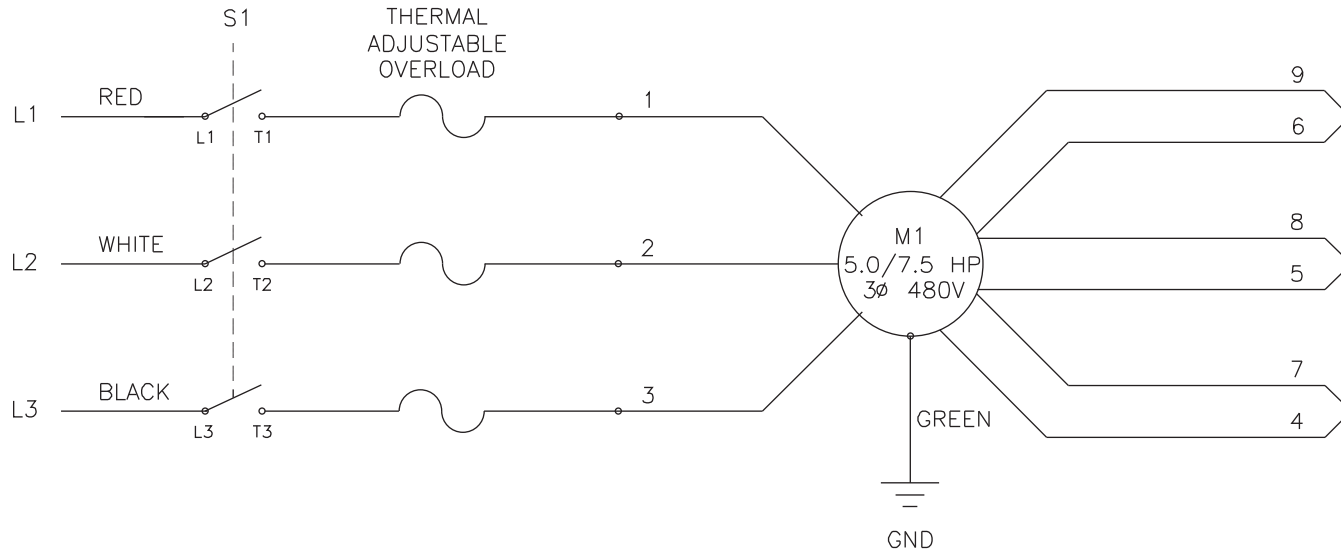
PDCW-0108S-063095-DCE

### WIRING DIAGRAM FOR CW-2405/3004-0ME3 (230 VOLT)



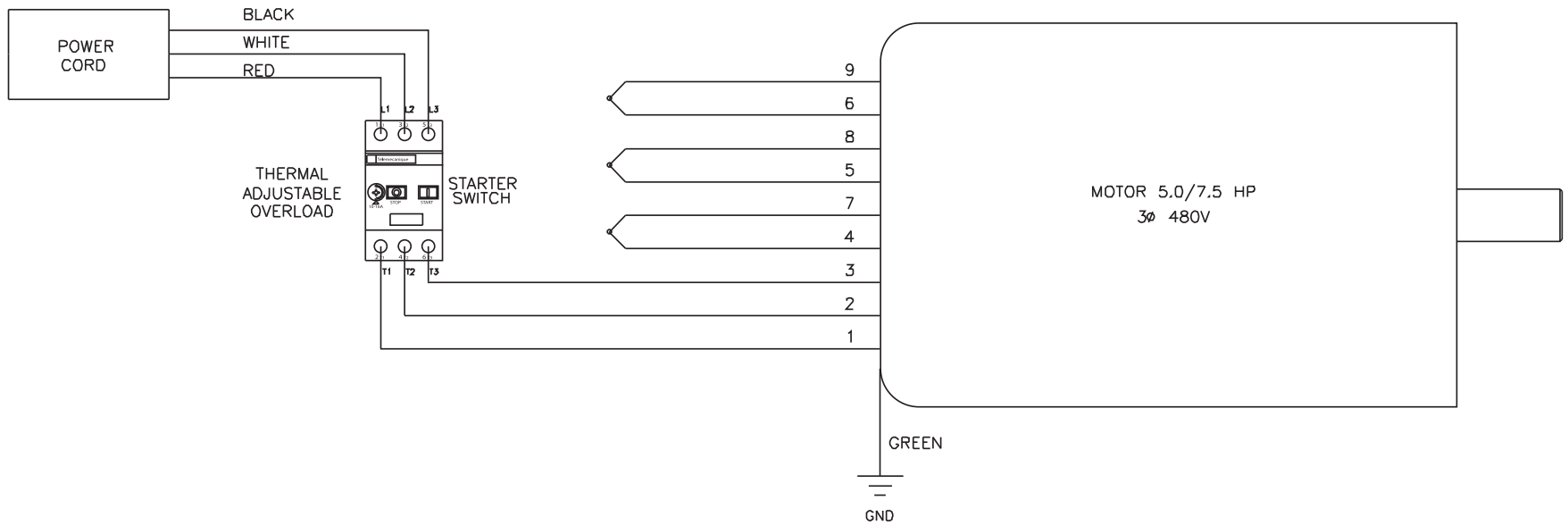
PDCW-0108D-063095-DCE

### WIRING SCHEMATIC FOR CW-2405/3004-0ME3 (CX-0003 OPTION) (460 VOLT)



PDCW-0109S-063095-DCE

### WIRING DIAGRAM FOR CW-2405/3004-0ME3 (CX-0003 OPTION) (460 VOLT)



PDCW-0109D-063095-DCE

---

NOTES

